



TUI MAGIC LIFE

TUI MAGIC LIFE FUERTEVENTURA

FACTSHEET

FOR INTERNAL USE ONLY.

HOTEL CONTACT DETAILS

| | |
|----------------------|---|
| Resort / Hotel Name | TUI MAGIC LIFE Fuerteventura |
| Star Rating | 4 |
| Season Open | All year |
| Display Line Address | Fuerteventura, Spain Avenida de los Pueblos no1 Urbanizacion Esquinzo Butihondo Morro Jable Fuerteventura Fuerteventura 35626 Spain |
| Tel | 0034 928 87 36 00 |
| E-Mail | info.fuerteventura@tui-magiclife.com |
| Homepage | https://www.magiclife.com/en/en/resort-holiday/spain/fuerteventura/resort-details/ |

GENERAL

It soars grandly over the endlessly long, natural sandy beach of Playa de Esquinzo and offers a fantastically beautiful view of the Atlantic. The beach (use dependent on the tides) is reachable directly from the resort via stairs, and stretches endlessly away. The private lodge promises exclusivity. There, you will find a special refuge with its own whirlpool and panorama pool to relax. Relaxation and wellness are the focus of this resort, along with a large selection of mountain bike tours for beginners and advanced riders.

USPS

- **Couples**

Walks along the beautiful sandy beach, pure relaxation in the Adults Only area, coming closer together in dance lessons, and romantic dinners at a table for two, just for couples. That is what the perfect couple's holiday looks like with us.

- **Fitness**

Do you want to mix fun, fitness and holiday with something different each day? At Club Fuerteventura, you're in exactly the right place, because we give you what you want. Join in our wide variety of fitness courses, be it Bodyweight Training, Step Aerobics or Indoor Cycling.

- **Cycling**

Whether on a mountain bike or a racing bike, we'll take you where you always wanted to be: Discover the secrets of Fuerteventura on our professional guided tours. The ideal climate, the lovely landscape and experienced guides offer you the perfect conditions. There is plenty of variety, because different tours are held regularly.

FOR INTERNAL USE ONLY.

| HOTEL TYPE | ESPECIALLY SUITABLE FOR | LOCATION |
|---------------------|-------------------------|-----------------|
| All Inclusive Hotel | Couples | At the Seaside |
| Beach | Families | On/By the Beach |
| Club | LGBTQ+ | |
| Family Friendly | Singles | |
| Holiday Resort | | |
| Singles | | |
| Sports & Activities | | |

KEY FACTS

| | |
|--|-----------------|
| Number of Buildings (Guest House, Main Building) | 14 |
| Buildings Stories | 3-4 |
| Property Size | 98,000m2 |
| Date of Last Renovation | 2018 |
| Total Number of Rooms | 697 |
| Number of Accessible Rooms | 5 |
| Number of Double Rooms with Connecting Doors | 59 |
| Hotel Manager | Mr Javier Maeso |

DIRECTIONS

| | |
|-------------------------|--|
| Directions From Airport | Fuerteventura airport (FUE), 80 km, approx. 70min transfer |
| Free Airport Transfer | ✓ Within TUI Package |

FOR INTERNAL USE ONLY.

ROOM DETAILS

DOUBLE ROOM

EXTERNAL BUILDING



View

| | |
|---------------------|---|
| Room Code | DZX1/DZM1 |
| Dimensions | 38m2 |
| Number of Bedrooms | 1 |
| Number of Bathrooms | 1 |
| Bed Size | Twin beds: approx. 100cm x 200cm |
| DZX1: Garden view. | |
| DZM1: Sea view. | |
| Specialties | Third adult will be accommodated on a put-up bed. |

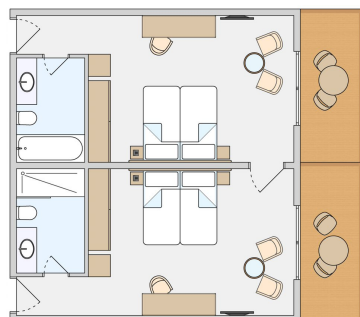
ROOM FACILITIES

NOTES

| | |
|-----------------------------------|---|
| Air Conditioning | Personally adjustable, centrally controlled, hourly |
| Balcony/Terrace | ✓ |
| Bathroom with Shower | ✓ |
| Complementary Bottled Water | ✓ |
| Desk | ✓ |
| Flat Screen TV | ✓ |
| Garden Furniture | ✓ |
| Hairdryer | ✓ |
| Hotel Controlled Air-conditioning | ✓ |
| Makeup Mirror | ✓ |
| Minibar | Fridge stocked with soft drinks on arrival |
| Room Safe | Free of charge |
| Satellite TV | ✓ |
| Select Your Room | ✓ |
| Telephone | ✓ |
| Toiletries | ✓ |
| Wi-Fi | Free of charge |

INTERCONNECTING 2
BEDROOM FAMILY ROOM

EXTERNAL BUILDING

FOR INTERNAL USE ONLY.

View

Specialties

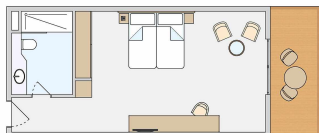
Details

| | |
|---------------------|--|
| Room Code | FZX1 |
| Dimensions | 76m ² |
| Number of Bedrooms | 2 |
| Number of Bathrooms | 2 |
| Bed Size | Twin beds: approx. 100cm x 200cm |
| View | FZX1: Garden view |
| Specialties | Fifth and sixth person will be accommodated on put-up beds. |
| Details | Min/Max. occupancy: 2-4 adults or teenagers 16-21 and 2 children aged 2-15. In addition 1x infant under 2 is allowed in the room. |

ROOM FACILITIES**NOTES**

| | |
|--------------------------------------|---|
| Air Conditioning | Personally adjustable, centrally controlled, hourly |
| Balcony/Terrace | ✓ |
| Bathroom with Shower & Bathtub | ✓ |
| Complementary Bottled Water | ✓ |
| Desk | ✓ |
| Flat Screen TV | ✓ |
| Fridge | ✓ |
| Hairdryer | ✓ |
| Hotel Controlled Air-conditioning | ✓ |
| Makeup Mirror | ✓ |
| Minibar | Stocked with water and soft drinks on arrival |
| Room Safe | Free of charge |
| Rooms with Connecting Door Available | Only FZX1 has a connecting door. |
| Satellite TV | ✓ |
| Select Your Room | ✓ |
| Toiletries | ✓ |
| Wi-Fi | Free of charge |

FAMILY ROOM**EXTERNAL BUILDING**

FOR INTERNAL USE ONLY.

| | | |
|------------|---------------------------|------------------------------|
| | Room Code | DZX2/DZM2 |
| | Dimensions | 42m2 |
| | Number of Bedrooms | 1 |
| | Number of Bathrooms | 1 |
| | View | Garden (71) and Seaview (45) |
| Facilities | 3rd/4th bed is a Sofa bed | |

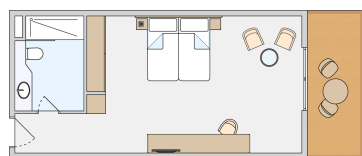
ROOM FACILITIES**NOTES**

| | |
|-----------------------------|---|
| Air Conditioning | Hourly, personally adjustable, centrally controlled |
| Balcony/Terrace | ✓ |
| Bathroom with Shower | ✓ |
| Complementary Bottled Water | ✓ |
| Flat Screen TV | ✓ |
| Fridge | ✓ |
| Hairdryer | ✓ |
| Makeup Mirror | ✓ |
| Minibar | Stocked with soft drinks on arrival |
| Room Safe | Free of charge |
| Satellite TV | Selection of international channels |
| Select Your Room | ✓ |
| Telephone | ✓ |
| Toiletries | ✓ |
| Wi-Fi | Free of charge |

PRIVATE LODGE DOUBLE
ROOM

ANNEX

FOR INTERNAL USE ONLY.



Room Code **DZX3**
 Dimensions **42m2**
 Number of Bedrooms **1**
 Number of Bathrooms **1**
 View **Side sea view**

Welcome gift and set of bathrobes.

Exclusive panorama pool, whirlpool and self-serve pool bar and hydromassage shower.

Specialties

Details

Min/Max. occupancy: 1-3 adults.

ROOM FACILITIES

NOTES

| | |
|-----------------------------------|---|
| Air Conditioning | Personally adjustable, centrally controlled, hourly |
| Balcony/Terrace | ✓ |
| Bathroom with Shower | ✓ |
| Ceiling Fan | ✓ |
| Complementary Bottled Water | ✓ |
| Desk | ✓ |
| Flat Screen TV | ✓ |
| Fridge | ✓ |
| Garden Furniture | ✓ |
| Hotel Controlled Air-conditioning | ✓ |
| Makeup Mirror | ✓ |
| Minibar | Stocked with soft drinks on arrival |
| Room Safe | Free of charge |
| Satellite TV | ✓ |
| Select Your Room | ✓ |
| Telephone | ✓ |
| Toiletries | ✓ |
| Wi-Fi | Free of charge |

PRIVATE LODGE JUNIOR SUITE

ANNEX

FOR INTERNAL USE ONLY.



| | | |
|-------------|--|---------------|
| | Room Code | JSX1 |
| | Dimensions | 84M2 |
| | Number of Bedrooms | 1 |
| | Number of Bathrooms | 1 |
| | View | Side sea view |
| | Welcome gift and set of bathrobes. | |
| Specialties | Exclusive panorama pool, whirlpool, self-serve pool bar and hydromassage shower | |
| Facilities | Consists of a living room and bedroom with open doorway (no door) | |
| Details | Min/Max. occupancy: 2-3 adults. | |

ROOM FACILITIES

NOTES

| | |
|--------------------------------|---|
| Air Conditioning | Personally adjustable, centrally controlled, hourly |
| Balcony/Terrace | ✓ |
| Bathroom with Shower | ✓ |
| Bathroom with Shower & Bathtub | ✓ |
| Complementary Bottled Water | ✓ |
| Flat Screen TV | ✓ |
| Fridge | ✓ |
| Full-length Mirror | ✓ |
| Hairdryer | ✓ |
| Makeup Mirror | ✓ |
| Minibar | Stocked with soft drinks on arrival |
| Room Safe | Free of charge |
| Satellite TV | ✓ |
| Select Your Room | ✓ |
| Separate Bedroom | ✓ |
| Toiletries | ✓ |
| Wi-Fi | Free of charge |

FOR INTERNAL USE ONLY.



| | | |
|-------------|--|----------|
| | Room Code | JSX2 |
| | Dimensions | 84M2 |
| | Number of Bedrooms | 1 |
| | Number of Bathrooms | 1 |
| | View | Sea view |
| | Welcome gift and set of bathrobes. | |
| Specialties | Exclusive panorama pool, whirlpool, self-serve pool bar and hydromassage shower | |
| Facilities | Consists of a living room and a bedroom with a connecting door | |
| Details | Min/Max. occupancy: 2-3 adults. | |

ROOM FACILITIES

NOTES

| | |
|--------------------------------|---|
| Air Conditioning | Personally adjustable, centrally controlled, hourly |
| Balcony/Terrace | ✓ |
| Bathroom with Shower & Bathtub | ✓ |
| Complementary Bottled Water | ✓ |
| Desk | ✓ |
| Fridge | ✓ |
| Hairdryer | ✓ |
| Makeup Mirror | ✓ |
| Minibar | Stocked with soft drinks on arrival |
| Room Safe | Free of charge |
| Satellite TV | ✓ |
| Select Your Room | ✓ |
| Separate Bedroom | ✓ |
| Separate Living Room | ✓ |
| Telephone | ✓ |
| Toiletries | ✓ |
| Wi-Fi | Free of charge |

EATING AND DRINKING

FOR INTERNAL USE ONLY.

KEY FACTS

| | |
|-------------------------|--|
| • Number of Restaurants | 5 |
| • Number of Bars | 5 |
| Main Restaurant | Magico |
| Bars | Wunderbar, Plaza Bar, Pool Bar, Premium Sports Bar, self-serve poolbar private lodge |
| Speciality Restaurants | The Flavour, Bodega, Trattoria, Fish & Grill |

CUISINE

Board Basis

| | |
|---------------|---|
| All Inclusive | ✓ |
|---------------|---|

Type of Restaurants & Bars

| | |
|-------------------|---|
| Buffet Restaurant | ✓ |
| Coffee Shop | ✓ |
| Local Speciality | ✓ |
| Pool Bar | ✓ |

Dietary/Lifestyle Requirements

| | |
|-------------------|---|
| Diabetic Friendly | ✓ |
| Gluten Free | ✓ |
| Vegetarian | ✓ |

Additional Options

| | |
|----------------|---|
| Late Breakfast | ✓ |
|----------------|---|

FOR INTERNAL USE ONLY.

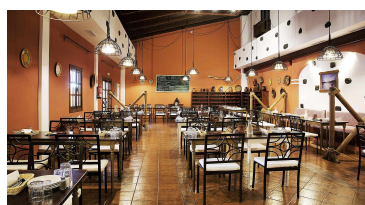
RESTAURANTS



| | |
|--------------------|---|
| Name | Magico |
| Details | Buffet Restaurant |
| Capacity | 650 Inside |
| Restaurant Details | Breakfast, late sleeper breakfast, lunch/dinner, show cooking |
| Bar Details | Self service |
| Opening Hours | Breakfast 7-11, lunch 1230-1430, dinner summer season: 18:30 - 21:30 and winter season: 18:00 - 21:00 |
| Location | In the main hotel area |



| | |
|--------------------|--|
| Name | The Flavour |
| Details | Speciality dishes from Egypt, Greece, Italy, Spain, Tunesia and Turkey |
| Capacity | 80 Inside |
| Restaurant Details | Waiter service |
| Bar Details | Waiter service |
| Offerings | Variety of bread/dips to start, 1x à la carte starter from a choice of 6, 1x à la carte main dish from a choice of 6, 1x à la carte dessert from a choice of 6 |
| Reservation | Book via the TUI MAGIC LIFE app or with guest relations |
| Dresscode | Smart/ Casual |
| Opening Hours | 19:00-21:30 |
| Location | In the main hotel area (plaza) |
| Specials | Included once per week per room as part of the All Inclusive |



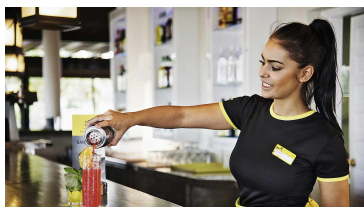
| | |
|--------------------|--|
| Name | La Bodega |
| Details | Spanish tapas |
| Capacity | 90 Inside |
| Restaurant Details | Spanish speciality dishes |
| Bar Details | Waiter service |
| Reservation | Book via the TUI MAGIC LIFE app or with guest relations |
| Dresscode | Smart / Casual |
| Opening Hours | 19:00-21:30 |
| Location | In the main hotel area (plaza) |
| Specials | Included once per week per room as part of the All Inclusive |

FOR INTERNAL USE ONLY.

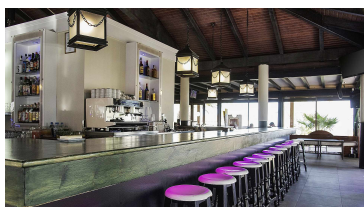
| | |
|-------------|---|
| Name | Fish & Grill |
| Details | Special theme menus |
| Reservation | Via the TUI MAGIC LIFE app or via guest relations |
| Specials | At additional charge |



| | |
|--------------|---------------------------------|
| Name | Trattoria |
| Details | Italian |
| View Details | Included once per room per week |

BARS

| | |
|--------------------|----------------------------|
| Name | Wunderbar |
| Details | Part of your all inclusive |
| Restaurant Details | Snacks |
| Bar Details | Waiter service |
| Opening Hours | 24 hours |
| Location | In the main building |



| | |
|---------------|--------------------------------|
| Name | Plaza Bar |
| Details | Part of your all inclusive |
| Opening Hours | 1800-0200 |
| Location | In the main hotel area (plaza) |
| View Details | Sea views |

FOR INTERNAL USE ONLY.



| | |
|--------------------|---------------------------------|
| Name | Pool Bar |
| Details | Part of your all inclusive |
| Restaurant Details | Snacks, Fries and more |
| Bar Details | Self serve drinks & bar service |
| Opening Hours | 1000-1800 |
| Location | Pool area |
| View Details | Sea views |

| | |
|---------|----------------------|
| Name | Premium Sports Bar |
| Details | At additional charge |

| | |
|----------|---|
| Name | Pod Bar |
| Details | (self-serve Private lodge) premium drinks |
| Specials | Included daily for Private Lodge guests |

FOR INTERNAL USE ONLY.

ACTIVITIES & ENTERTAINMENT

All of the below activities are available on site, unless otherwise stated.

FITNESS

Included for free

| | |
|-----------------------|---|
| Aerobics | |
| Aqua Fitness | |
| Dance Classes | Salsa and other dance classes available |
| Group Fitness Classes | Teens Fit & Fun, several times in two weeks |
| Gym | |
| HIIT | |
| Indoor Cycling | |
| Step Aerobics | |
| Trampoline Fitness | |
| Yoga | |
| Zumba | |

DAYTIME SPORTS & ACTIVITIES

Included for free

| | |
|-------------------------|--|
| Archery | Archery for MyMo Maxis, several times a week |
| Cycling/Mountain Biking | Road bike tours per day, mountain bike tours and teens tours (13+) on certain days |
| Darts | |
| Family Friendly Sports | |
| Football | |
| Shuffle Board | |
| Table Tennis | |
| Tennis | Tennis for MyMo Maxi , several times a week |
| Volleyball | |
| Water Polo | |

At extra cost

| | |
|--------------|--------------------|
| Excursions | with TUI |
| Golf | Golf course nearby |
| Horse riding | External provider |

EVENING ENTERTAINMENT

Included for free

FOR INTERNAL USE ONLY.

| | |
|---------------------|---|
| Childrens Programme | Kids show, once in 2 weeks, MyMo Maxis Night, 6x a week MyMo photo session, 1 per week, Two motto days (topic: e.g. pirate day) per week, |
| Dance Shows | |
| Gala Night | |
| Live Music | |
| Musicals | |
| Parties | Several times a week: Silent party, karaoke, sing along, masquerade ball, flashback party 80's/90's, Family Disco, 1x per week, |
| Quizzes | Bingo evening |
| Theatre Style Shows | |

CHILDCARE**Included for free**

| | |
|-----------------|---|
| Kids' Clubs | MyMo Minis (from 3-5 years) MyMo Maxis (from 6-12 years) |
| Teen Activities | Teens (from 13-16 years) Teens programme several days a week: Sports for Teens, such as Archery, Tennis or Mountainbike, several times a week, Team Sport (e.g. Water Polo, Football, Beach Volleyball), several times a week, Moonlight Sports (such as Beach Volleyball) for Teens, once a week, General Aqua Fit, Zumba, belly butt & thighs classes open from 13+ Fun & Game (e.g. Darts, Shuffleboard, Boccia), several times a week, Music Session - it's all about music, once a week Teens Night, several times in two weeks, Teens Party, once in two weeks, Teens Stammtisch (EN: Regulars) in MAGICO (lunch or dinner), several times a week, Teens Performance (such as flash mobs), once in two weeks, |

FOR INTERNAL USE ONLY.

GENERAL HOTEL FACILITIES

| Facility | Notes |
|-----------------------|---|
| Air Conditioning | |
| Beach | Public, rocky, gently sloping, natural sandy beach at 100 m from club |
| Billiard Table | |
| Cash Point | Outside the club |
| Children's Pool | Splash |
| Cots | |
| Doctor/Nurse | |
| Extra Beds | On request |
| Games Room | |
| Garden Patio | |
| Gym | |
| Hotel Shops | Souvenir shop, mini-market |
| Kids' Club | |
| Library | |
| Lift | |
| Minimart | |
| Outside Pool | 6 pools: Activity Pool, Relaxation Pool, Sport Pool (semi-Olympic), Naturist Pool, Panorama Pool & Whirlpool in the Private Lodge |
| Picnic Area | |
| Playground | |
| Smoking Area | |
| spare-h6 | |
| spare-h7 | |
| spare-h8 | |
| Sunbeds | |
| Terrace | |
| Wi-Fi in Public Areas | |

CONGRESS & CONFERENCE ROOMS

Rates: All-day flat rate: €30 per person • 2 "classic" coffee breaks • Standard conference technology including projector • A professional seminar room appropriate to the group size Half-day flat rate: €22 per person • 1 "classic" coffee breaks • Standard conference technology including projector • a professional seminar room appropriate to the group size Coffee breaks: Standard coffee breaks with sweets, fruit, etc. or various personalized coffee breaks possible as desired (*at an additional charge). The theatre 432m2 can be booked as a conference room for bigger groups as well (Theatre style: 350 Persons cabaret:75 Persons)

| | |
|------------------------------|---------------|
| Quantity of Conference Rooms | 1 Sala Amanay |
| Size of Conference Room | 272m2 |
| Total Capacity | 120 |

FOR INTERNAL USE ONLY.

CONGRESS & CONFERENCE ROOMS

Rates: All-day flat rate: €30 per person • 2 "classic" coffee breaks • Standard conference technology including projector • A professional seminar room appropriate to the group size Half-day flat rate: €22 per person • 1 "classic" coffee breaks • Standard conference technology including projector • a professional seminar room appropriate to the group size Coffee breaks: Standard coffee breaks with sweets, fruit, etc. or various personalized coffee breaks possible as desired (*at an additional charge). The theatre 432m² can be booked as a conference room for bigger groups as well (Theatre style: 350 Persons cabaret: 75 Persons)

| | |
|----------------------------|------|
| Wi-Fi Cost Per Hour | Free |
| No. of Pax U Plan | 40 |
| No. of Pax Cabaret Style | |
| No. of Pax Theatre Style | 200 |
| No. of Pax Boardroom Style | |

EQUIPMENT OF MEETING & CONFERENCE ROOMS

| | |
|----------------------|---|
| Conference Equipment | 1 Flipchart, 1 Projector and Screen for the projector: 2m x 2.5 m. In the Theatre - LED Screen: 3.10 m x 3.90 m & Sound & Light Team |
| Air Conditioning | ✓ |
| Congress Support | ✓ |
| Wi-Fi | ✓ |

FOR INTERNAL USE ONLY.

SERVICES & LOCAL INFORMATION

All of the below services are available on site, unless stated otherwise.

| | |
|--|--------------------------|
| 24-Hour Reception | |
| Beach/Pool Towels - Free | |
| Bike Rental | Close to the club |
| Car Hire | |
| Change of Bedding | |
| Change of Towels | |
| Excursions, Tours, Attractions and Event Tickets | |
| Hairdresser | |
| Hotel/Club Shops | |
| Hotel Doctor | |
| Laundry Service | Additional charge |
| Luggage Storage | |
| Multi-lingual Personnel | German, English, Spanish |
| Towels At The Beach | |
| Towels At The Pool | |

FACILITIES ON SITE / PROXIMITY TO HOTEL

The below services are available on site or nearby the club.

| Facility | On Site | Notes |
|------------------|---------|--|
| Beach | | Public, rocky, gently sloping, natural sandy beach, approx. 100m from club |
| City Centre | | Morro Jable, 8km |
| Closest Airport | ✓ | Fuerteventura (FUE), 90 km |
| Closest City | | Costa Calma, 25km |
| Doctor | ✓ | |
| Horseriding | | External provider |
| Shopping Options | | Morro Jable, 8km or Jandia 6 km |
| Tennis Court | ✓ | 2 tennis quartz sand courts with floodlights |

FOR INTERNAL USE ONLY.**ACCEPTED PAYMENT METHODS**

| | |
|-----------------------|---|
| American Express | ✓ |
| Local Currency (Cash) | ✓ |
| Master/EuroCard | ✓ |
| TUI Card | ✓ |
| VISA | ✓ |

GENERAL SECURITY & SAFETY

| | |
|--|---|
| CCTV | ✓ |
| Emergency Exit on Every Floor | ✓ |
| Fire Certificate | ✓ |
| Fire Detector | ✓ |
| Hotel Staff Trained in Case of Emergencies | ✓ |
| Illumination in Park | ✓ |
| Security Personnel | ✓ |
| Smoke Detector | ✓ |
| Sprinkler | ✓ |
| Ventilated Staircases | ✓ |

FOR INTERNAL USE ONLY.

HOTEL ACCESSIBILITY

| Adapted Rooms | Notes | |
|--|--|--|
| General Hotel/Club Facilities | | |
| Considered Generally Suitable for Guests in a Wheelchair/With Reduced Mobility ? | ✗ | |
| Wheelchair Adapted Rooms ? | ✓ | |
| Possibility to Rent a Wheelchair ? | ✓ | |
| Cost to Rent a Wheelchair | TBC - local clinic | |
| Elevator Door Width | 80 cm | |
| Are All Areas Accessible For Wheelchair Users/Users With Reduced Mobility By Ramps and/or Elevators? | ✓ | |
| Areas Inaccessible For Those in a Wheelchair/With Reduced Mobility | Private lodge 1 step and lots of steps to the beach | |
| Swimming Pool(s) | | |
| Hotel Accessibility of Swimming Pool | ✓ | |
| Pool Steps - Number of Steps | 0 | |
| Pool Ladder - Number of Steps | 0 | |
| Pool Ramp Available | ✓ | |
| Pool Lift Available | ✓ | |
| Location of Bathrooms For Those With Additional Needs | Lobby,theatre,poolbar,shops area,restaurant,naturist area/wellness | |
| Location of Refridgerated Medication Storage | In minibar located in room | |
| Hotel/Club Location / Environment | | |
| Flat | ✗ | |
| Slightly Rising or Descending Landscape | ✗ | |
| Hillside | ✓ | |
| Paved Sidewalks / Streets | ✓ | |
| Paved Way to The Beach Promenade | ✗ | |
| Paved Way to The Beach | ✗ | |
| Rooms | Adapted | Standard |
| Adapted Category/ies | DZX1,DZM1 | Standard -sea view -double family-family rooms |
| Number of Adapted Rooms | 5 | n/a |
| Adapted Room Location | Floors 1,2,3 | n/a |
| Maximum Occupancy | 3 | 1-6 |
| Doors Widths | | |
| Entrance Width | 80 cm | 80 cm |
| Bedroom Width | | |
| Living Room Width | | |
| Bathroom Width | 80 cm | 70 cm |
| Balcony Width | 114 cm | 114 cm |

FOR INTERNAL USE ONLY.

HOTEL ACCESSIBILITY

| Adapted Rooms | Notes | |
|---|-------|---|
| Bathrooms | | |
| Adapted Bathtub | ✗ | ✗ |
| Adapted Shower | ✓ | ✗ |
| Wheel-in Shower | ✓ | ✗ |
| Shower Seat | ✓ | ✗ |
| Support Shower | ✓ | ✗ |
| Support Bathtub | ✗ | ✗ |
| Support/Grab Rails Near WC | ✓ | ✗ |
| Enough Wheelchair Turning Room/Floor Space Next to the WC | ✓ | ✗ |
| Wheelchair Space, From Left Frontal View of WC | ✗ | ✗ |
| Wheelchair Space, From Right Frontal View of WC | ✓ | ✗ |
| Washbasin Accessible With Wheelchair | ✓ | ✗ |
| Entry Height of the Shower | | |
| Entry Height of the Bathtub | | |
| Height of the Basin | 88 cm | |
| Height of the Toilet | 40 cm | |

Any Additional Information

This unit is not suitable for less mobile as it is a very large complex with facilities very spread out.

FOR INTERNAL USE ONLY.

SUSTAINABILITY

CERTIFICATES



| Name | Travelife Standard for Hotels & Accommodations |
|-------------|--|
| Description | |

ACTIONS

Biodiversity and ecosystems**Destination & community**

Annual sustainability report with targets

Guests can take part in sustainable activities

Hotel/Club supports local charities/community events

Sustainability training for employees

Food

Bulk dispenser to reduce single-use plastic

Herb garden/green house for guest consumption

Energy

Energy saving switches in rooms

Motion sensor lights

Vegetarian menu options

Waste

Food waste targets in place

Only chemical-free cleaning products in use

Only water-efficient toilets in use

Water

Hotel/Club encourages towel re-use

Waste water re-used in hotel operations

FUNFACTS

FOR INTERNAL USE ONLY.

- **The Eco Glass Filter**

The club makes use of Eco Glass Filter Media (Active Clear Glass) to fill the swimming pool water filtration systems. This environmentally friendly alternative to traditional sand offers several benefits. Eco Glass Filter Media is made from recycled glass that offers improved efficiency, leading to savings in water, energy, and chemical treatment costs by reducing the need for backwashing. The glass smooth surface prevents bacteria from getting trapped, ensuring a higher level of cleanliness while having a longer lifespan.