



**TUI MAGIC LIFE**

## **TUI MAGIC LIFE BODRUM FACTSHEET**



**FOR INTERNAL USE ONLY.****HOTEL CONTACT DETAILS**

Resort / Hotel Name	TUI MAGIC LIFE Bodrum
Star Rating	4
Season Open	Summer
Display Line Address	Bodrum, Türkiye Mevkii PK 357 Bodrum 48400 Turkey
Tel	0090 252 312 00 30
Fax	0090 252 316 89 88
E-Mail	info.bodrum@tui-magiclife.com
Homepage	<a href="https://www.magiclife.com/en/en/resort-holiday/turkey/bodrum-resort-details/">https://www.magiclife.com/en/en/resort-holiday/turkey/bodrum-resort-details/</a>

**GENERAL**

This club nestles perfectly in the unique coast around Bodrum. Especially party and fitness lovers will find the perfect getaway in our club with the new Adults only concept from summer 2024. The resort scores in addition to an extensive sports and entertainment program by its prime location on the beautiful sandy-gravel beach. Five restaurants and four bars will cater to the guests' well-being.

**USPS**

- **Party & Show**

Attention party animals! Turn the night into day at the different theme parties and night shows and dance the night away.

- **Cycling**

Exploring the area sporty and fast? Then let yourself be enchanted by the beautiful landscape of the Aegean Sea on a guided mountain bike tour!

- **Watersports**

You want to feel the real adrenaline? The perfect wind conditions and cristal clear water are perfect for trying new sports or even improve your skills on the water.

- **Singles & Friends**

You travel alone and would like to make new contacts while on holiday? Nobody stays alone in our extensive sports and entertainment offer. Find your like-minded Person at exciting beach tennis matches, sweaty fitness classes and colourful party nights.

- **Couples**

This is the perfect place for couples: work outs together in the morning, a romantic dinner in the speciality restaurants- just enjoy your favourite time with your loved one.

## FOR INTERNAL USE ONLY.

HOTEL TYPE	ESPECIALLY SUITABLE FOR	LOCATION
All Inclusive Hotel	Couples	At the Seaside
Club/Resort Hotel	Groups	Central Location
Holiday Resort	LGBTQ+	Close to The Town Centre
Singles	Party	On/By the Beach
Sports & Activities	Singles	
Waterpark		

## KEY FACTS

Number of Buildings (Guest House, Main Building)	3
Buildings Stories	4
Property Size	70,000 m <sup>2</sup>
Date of Last Renovation	2018
Total Number of Rooms	371
Number of Standard Double Rooms	194
Number of Superior Double Rooms	64
Number of Family Rooms	24
Number of Suites	58
Number of Accessible Rooms	3
Number of Double Rooms with Connecting Doors	36 (18/18 Superior (Club Room) 2 Junior Suites
Hotel Manager	Utku Çelebi

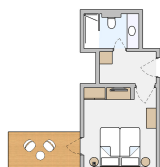
## DIRECTIONS

Directions From Airport	Bodrum Airport (BJV), 45km transfer
Free Airport Transfer	✓ Within TUI Package

## FOR INTERNAL USE ONLY.

## ROOM DETAILS

## DOUBLE ROOM



## EXTERNAL BUILDING

Room Code **DZM1**  
 Dimensions **22m2**  
 Number of Bedrooms **1**  
 Number of Bathrooms **1**  
 View **Sea view**  
 Min/Max. occupancy:  
**1-2 adults.**

Details

## ROOM FACILITIES

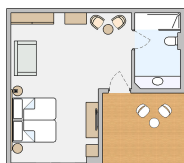
## NOTES

Air Conditioning	Personally adjustable, centrally controlled
Balcony/Terrace	✓
Bathroom with Shower	✓
Complementary Bottled Water	✓
Flat Screen TV	✓
Hairdryer	✓
Minibar	Stocked with water and soft drinks on arrival
Room Safe	Free of charge
Satellite TV	✓
Select Your Room	✓
Telephone	✓
Toiletries	✓
Wi-Fi	Free of charge

## SUPERIOR DOUBLE ROOM

## EXTERNAL BUILDING

## FOR INTERNAL USE ONLY.



	Room Code	DZM2
	Dimensions	33-40 m2
	Number of Bedrooms	1
	Number of Bathrooms	1
	View	Sea view
Specialties	Third adult will be accommodated on the sofa bed. Balcony and roof terrace with seating.	
Details	Min/Max. occupancy: 2-3 adults.	

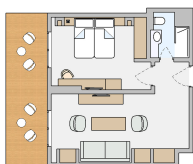
## ROOM FACILITIES

## NOTES

Air Conditioning	Personally adjustable, centrally controlled
Balcony/Terrace	✓
Bathroom with Shower	✓
Hairdryer	✓
Minibar	Stocked with water and soft drinks on arrival
Room Safe	Free of charge
Satellite TV	✓
Select Your Room	✓
Separate Living Room	✓
Tea/Coffee Maker/Machine	✓
Telephone	✓
Toiletries	✓
Wi-Fi	Free of charge

## SUITE

## EXTERNAL BUILDING



	Room Code	SUM1
	Dimensions	60m2
	Number of Bedrooms	1
	Number of Bathrooms	1
	View	Sea view
Details	Min/Max. occupancy: 1-3 adults.	

## ROOM FACILITIES

## NOTES

## FOR INTERNAL USE ONLY.

Air Conditioning	Personally adjustable, centrally controlled
Balcony/Terrace	✓
Bathroom with Shower	✓
Hairdryer	✓
Makeup Mirror	✓
Minibar	Stocked with water and soft drinks on arrival
Room Safe	Free of charge
Satellite TV	✓
Select Your Room	✓
Separate Bedroom	✓
Separate Living Room	✓
Telephone	✓
Toiletries	✓
Wi-Fi	Free of charge

## DOUBLE ROOM

## MAIN



Room Code	DZX2
Dimensions	26m <sup>2</sup>
Number of Bedrooms	1
Number of Bathrooms	1
View	Garden view

Third adult will be accommodated on the sofa bed. Balcony and roof terrace with seating.

Specialties	Third adult will be accommodated on the sofa bed. Balcony and roof terrace with seating.
Details	Min/Max. occupancy: 2-3 adults.

## ROOM FACILITIES

## NOTES

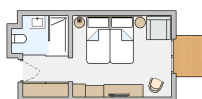
Air Conditioning	Personally adjustable, centrally controlled
Balcony/Terrace	✓
Bathroom with Shower	✓
Complementary Bottled Water	✓
Flat Screen TV	✓
Hairdryer	✓
Room Safe	Free of charge
Satellite TV	✓

## FOR INTERNAL USE ONLY.

ROOM FACILITIES	NOTES
Select Your Room	✓
Suitcase Stacking	✓
Tea/Coffee Maker/Machine	Kettle on request
Telephone	✓
Toiletries	✓
Wi-Fi	Free of charge

## DOUBLE ROOM

## MAIN



Room Code	DZX1
Dimensions	22m2
Number of Bedrooms	1
Number of Bathrooms	1
View	Garden view
Specialties	Third person will be accommodated on the sofa bed.
Details	Min/Max. occupancy: 1-2 adults. Plus 1 child aged 2-15.

ROOM FACILITIES	NOTES
Air Conditioning	Personally adjustable, centrally controlled
Balcony/Terrace	✓
Bathroom with Shower	✓
Hairdryer	✓
Minibar	Stocked with water and soft drinks on arrival
Room Safe	Free of charge
Satellite TV	✓
Select Your Room	✓
Telephone	✓
Toiletries	✓
Wi-Fi	Free of charge

## FOR INTERNAL USE ONLY.

## JUNIOR SUITE



## MAIN

Room Code **JSM1**  
 Dimensions **48m2**  
 Number of Bedrooms **1**  
 Number of Bathrooms **1**  
 View **Sea view**

Min/Max. occupancy:  
**2-3 adults or 2 adults  
 plus 2 children aged  
 2-15**

Details

## ROOM FACILITIES

## NOTES

Air Conditioning	Personally adjustable, centrally controlled
Balcony/Terrace	✓
Bathroom with Shower	✓
Flat Screen TV	✓
Hairdryer	✓
In Room Whirlpool	✓
Minibar	Stocked with water and soft drinks on arrival
Room Safe	Free of charge
Satellite TV	✓
Select Your Room	✓
Separate Living Room	✓
Telephone	✓
Wi-Fi	Free of charge

## EATING AND DRINKING

## KEY FACTS

• Number of Restaurants	6
• Number of Bars	6
Main Restaurant	Magico
Bars	Main bar, Aqua bar, Beach bar, Pool bar, Snack bar, Infinity bar (18+)
Speciality Restaurants	The Flavour, Levante, Beach House

## CUISINE



## FOR INTERNAL USE ONLY.

**Board Basis**

All Inclusive	✓
---------------	---

**Type of Restaurants & Bars**

Buffet Restaurant	✓
Coffee Shop	✓
Local Speciality	✓
Pool Bar	✓

**Dietary/Lifestyle Requirements**

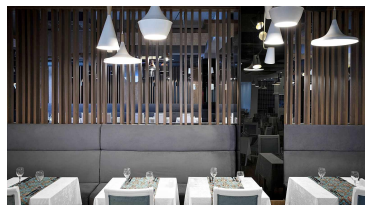
Diabetic Friendly	✓
Gluten Free	✓
Vegetarian	✓

**Additional Options**

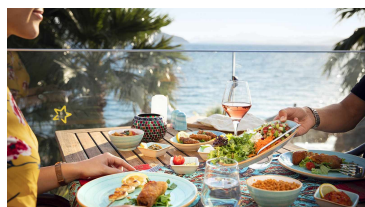
Late Breakfast	✓
----------------	---

## FOR INTERNAL USE ONLY.

### RESTAURANTS



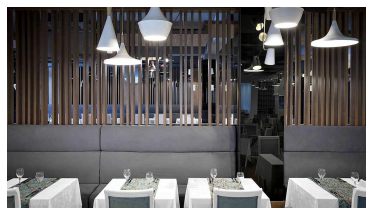
Name	Magico
Details	Part of the all inclusive
Capacity	420 inside, 180 outside
Bar Details	Self serve drinks
Opening Hours	Breakfast 07:00-11:00, lunch 12:30-14:30, dinner 19:00-21:30
Location	Main building



Name	Levante
Details	Part of the all inclusive
Capacity	80 outside
Restaurant Details	Local Turkish cuisine
Bar Details	Waiter service
Reservation	Book via the kiosks, the TUI MAGIC LIFE app or via guest relations
Dresscode	Smart casual
Opening Hours	19:00 - 21:30
Location	Near the beach
View Details	Once per week per room



Name	The Flavour
Details	Part of the all inclusive
Capacity	40 outside
Restaurant Details	Waiter service
Bar Details	Bar service
Offerings	Variety of bread/dips to start, 1x à la carte starter from a choice of 6, 1x à la carte main dish from a choice of 6, 1x à la carte dessert from a choice of 6
Reservation	Book via the kiosks, the TUI MAGIC LIFE app or via guest relations
Dresscode	Smart casual
Opening Hours	19:00 - 21:30
Location	Seafront
View Details	Once per week per room

**FOR INTERNAL USE ONLY.**

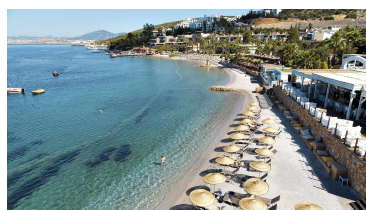
Name	Butchers Shop
Details	Additional charge
Capacity	50 outside
Restaurant Details	Steaks
Bar Details	Waiter service
Reservation	Book on the APP, with guest relations or at a kiosk
Dresscode	Smart casual
Opening Hours	19:00 - 21:30
Location	Seafront



Name	Sunset
Details	Additional charge
Bar Details	Waiter service
Reservation	Book on the TUI MAGIC LIFE app, with guest relations or at a kiosk
Dresscode	Smart casual
Location	Near the beach

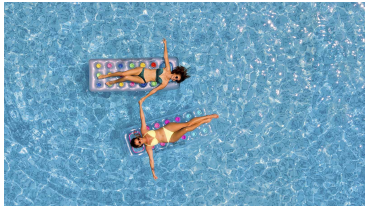
**BARS**

Name	Pool Bar
Details	
Bar Details	Bar service
Opening Hours	10:00-18:00
Location	Activity Pool



Name	Beach bar
Details	
Bar Details	Bar service
Offerings	Snacks
Opening Hours	10:00-18:00
Location	Seafront

FOR INTERNAL USE ONLY.



Name	Aqua Bar
Details	
Bar Details	Bar service
Opening Hours	10:00-18:00
Location	Childrens Pool



Name	Wunderbar
Details	
Bar Details	Self serve drinks & bar service
Offerings	Snacks
Opening Hours	24 hours
Location	Main building

## FOR INTERNAL USE ONLY.

## ACTIVITIES &amp; ENTERTAINMENT

All of the below activities are available on site, unless otherwise stated.

## FITNESS

## Included for free

Aerobics

Aqua Fitness

Dance Classes

HIIT

Indoor Cycling

Pilates

Relaxation/Meditation

Step Aerobics

Trampoline Fitness

Yoga

Zumba

## WATERSPORTS

## Included for free

Canoeing

16+

Windsurfing

Windsurfing license needed, lessons possible at extra charge, 16+

## DAYTIME SPORTS &amp; ACTIVITIES

## Included for free

Archery

Cycling/Mountain Biking

6 days per week

Darts

Football

Shuffle Board

Tennis

Additional charge for lessons

Volleyball

Water Polo

## At extra cost

Excursions

with TUI

## EVENING ENTERTAINMENT

## Included for free



FOR INTERNAL USE ONLY.

Dance Shows	
Gala Night	
Live Music	
Parties	Silent Disco Party, La Vida Loca, Crazy Party, Beach Party, Social Party

## FOR INTERNAL USE ONLY.

## GENERAL HOTEL FACILITIES

Facility	Notes
Beach	
Cots	
Doctor/Nurse	
First Aid	
Garden Patio	
Gym	
Hotel Shops	
Indoor Pool	1
Library	
Lift	
Newspapers	
Outside Pool	
Parasols	
Parking Area	
Smoking Area	
Sunbeds	
Sunset Bar	
Terrace	
Wi-Fi in Public Areas	

## CONGRESS &amp; CONFERENCE ROOMS

Quantity of Conference Rooms	1 main and 3 small rooms (14-22pax)
Size of Conference Room	750m2
Total Capacity	650pax
No. of Pax U Plan	
No. of Pax Cabaret Style	
No. of Pax Theatre Style	650
No. of Pax Boardroom Style	

## EQUIPMENT OF MEETING &amp; CONFERENCE ROOMS

Air Conditioning	✓
Congress Support	✓
Wi-Fi	✓

## FOR INTERNAL USE ONLY.

## SERVICES &amp; LOCAL INFORMATION

All of the below services are available on site, unless otherwise stated.

24-Hour Reception

Beach/Pool Towels - Free

Excursions, Tours, Attractions and Event Tickets

Hotel Doctor

Laundry Service

Luggage Storage

Support for Tour and Trip Planning

Towels At The Beach

Towels At The Pool

## FACILITIES ON SITE / PROXIMITY TO HOTEL

The below services are available on site or nearby the club.

Facility	On Site	Notes
Beach	✓	Sandy beach
Bus Stop	✓	At the hotel entrance
Closest Airport		Bodrum (BJV), 45km
Conference Centre	✓	
Doctor	✓	
Shopping Options		Bodrum, 4 km
Tennis Court	✓	3 tennis courts (quartz sand)

## ACCEPTED PAYMENT METHODS

American Express	✓
Local Currency (Cash)	✓
Master/EuroCard	✓
VISA	✓

## GENERAL SECURITY &amp; SAFETY

CCTV	✓
Emergency Exit on Every Floor	✓
Fire Certificate	✓
Fire Detector	✓
Hotel Staff Trained in Case of Emergencies	✓
Illumination in Park	✓
Security Personnel	✓
Smoke Detector	✓
Sprinkler	✓
Ventilated Staircases	✓

## FOR INTERNAL USE ONLY.

## HOTEL ACCESSIBILITY

Adapted Rooms	Notes	
<b>General Hotel/Club Facilities</b>		
Considered Generally Suitable for Guests in a Wheelchair/With Reduced Mobility ?	✓	
Wheelchair Adapted Rooms ?	✓	
Possibility to Rent a Wheelchair ?	✓	
Cost to Rent a Wheelchair	Price on request via hotel	
Elevator Door Width	80 cm	
Are All Areas Accessible For Wheelchair Users/Users With Reduced Mobility By Ramps and/or Elevators?	✓	
Areas Inaccessible For Those in a Wheelchair/With Reduced Mobility	Ampitheatre WC	
<b>Swimming Pool(s)</b>		
Hotel Accessibility of Swimming Pool	✓	
Pool Steps - Number of Steps	Infinity Pool 6 steps	
Pool Ladder - Number of Steps	TBC	
Pool Ramp Available	✓	
Pool Lift Available	✗	
Location of Bathrooms For Those With Additional Needs	Between beach & activity pool	
Location of Refridgerated Medication Storage	In the rooms: mini bar	
<b>Hotel/Club Location / Environment</b>		
Flat	✗	
Slightly Rising or Descending Landscape	✓	
Hillside	✓	
Paved Sidewalks / Streets	✓	
Paved Way to The Beach Promenade	✗	
Paved Way to The Beach	✗	
<b>Rooms</b>	<b>Adapted</b>	<b>Standard</b>
Adapted Category/ies	DZX1 standard room	
Number of Adapted Rooms	2	
Adapted Room Location	Main Building, 4th floor,	
Maximum Occupancy	2	
<b>Doors Widths</b>		
Entrance Width	90 cm	70 cm
Bedroom Width	90 cm	90 cm
Living Room Width		
Bathroom Width	87 cm	70 cm
Balcony Width	65 cm	70 cm
<b>Bathrooms</b>		
Adapted Bathtub	✗	✗
Adapted Shower	✓	✗

## FOR INTERNAL USE ONLY.

## HOTEL ACCESSIBILITY

Adapted Rooms	Notes	
Wheel-in Shower	✓	✗
Shower Seat	✓	✗
Support Shower	✓	✗
Support Bathtub	✗	✗
Support/Grab Rails Near WC	✓	✗
Enough Wheelchair Turning Room/Floor Space Next to the WC	✓	✗
Wheelchair Space, From Left Frontal View of WC	✗	✗
Wheelchair Space, From Right Frontal View of WC	✓	✗
Washbasin Accessible With Wheelchair	✓	✗
Entry Height of the Shower	2 cm	
Entry Height of the Bathtub		
Height of the Basin	81 cm	
Height of the Toilet	53 cm	
<b>Any Additional Information</b>		

Some facilities are not 100% accessible for wheelchairs.



FOR INTERNAL USE ONLY.

## SUSTAINABILITY

## CERTIFICATES



Name	Travelife Standard for Hotels & Accommodations
Description	

## ACTIONS

**Biodiversity and ecosystems****Destination & community**

Annual sustainability report with targets	
Guests can take part in sustainable activities	
Hotel/Club is sustainable constructed and refurbished	
Hotel/Club supports local charities/community events	
Sustainability training for employees	

**Food**

Bulk dispenser to reduce single-use plastic	
Herb garden/green house for guest consumption	

**Energy**

Electric car charging stations	
Energy saving switches in rooms	
Hotel/Club generates it's own renewable energy	

**Waste**

Food waste targets in place	
Only water-efficient toilets in use	

**Water**

Efficient water saving laundry operation	
Efficient water saving pool cleaning operation	
Hotel/Club encourages towel re-use	
Possibility to skip room cleaning	
Waste water re-used in hotel operations	

## FUNFACTS

**FOR INTERNAL USE ONLY.**

- **Water-saving Campaign**

One of the club's standout initiatives is a unique water-saving campaign. This campaign is about encouraging and inspiring both guests and employees to save water by installing water-saving devices in the rooms. These devices are ingeniously designed to reduce water consumption in bathrooms and kitchens, without compromising guests' comfort or convenience.

- **Water Treatment System**

Furthermore, the resort has its water treatment system, which efficiently treats wastewater which is then put to good use for garden irrigation. This not only helps conserve water but also ensures the hotel's lush gardens remain a striking feature.